



MetroWest+

Portishead Branch Line (MetroWest Phase 1)

TR040011

Applicant: North Somerset District Council

2.15 to 2.17 - Trinity Footbridge plans: Proposed General Arrangement Plan; Proposed Landscaping General Arrangement Plan; Electrical Layout General Arrangement

The Infrastructure Planning (Applications: Prescribed Forms and Procedure) Regulations 2009, regulation 5(2)(o)
Planning Act 2008

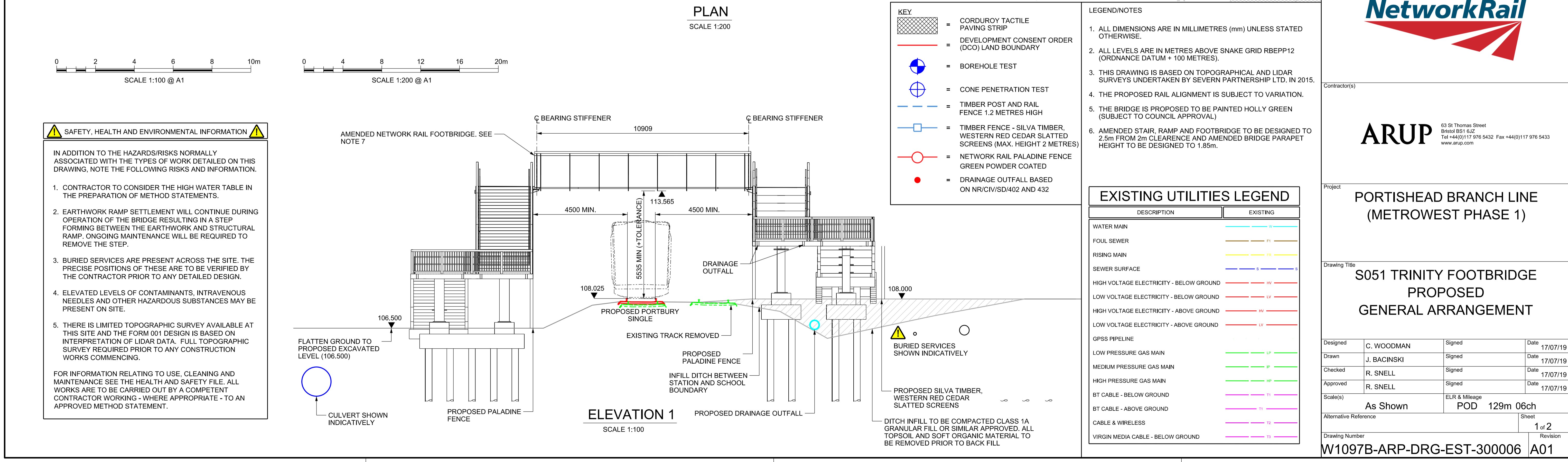
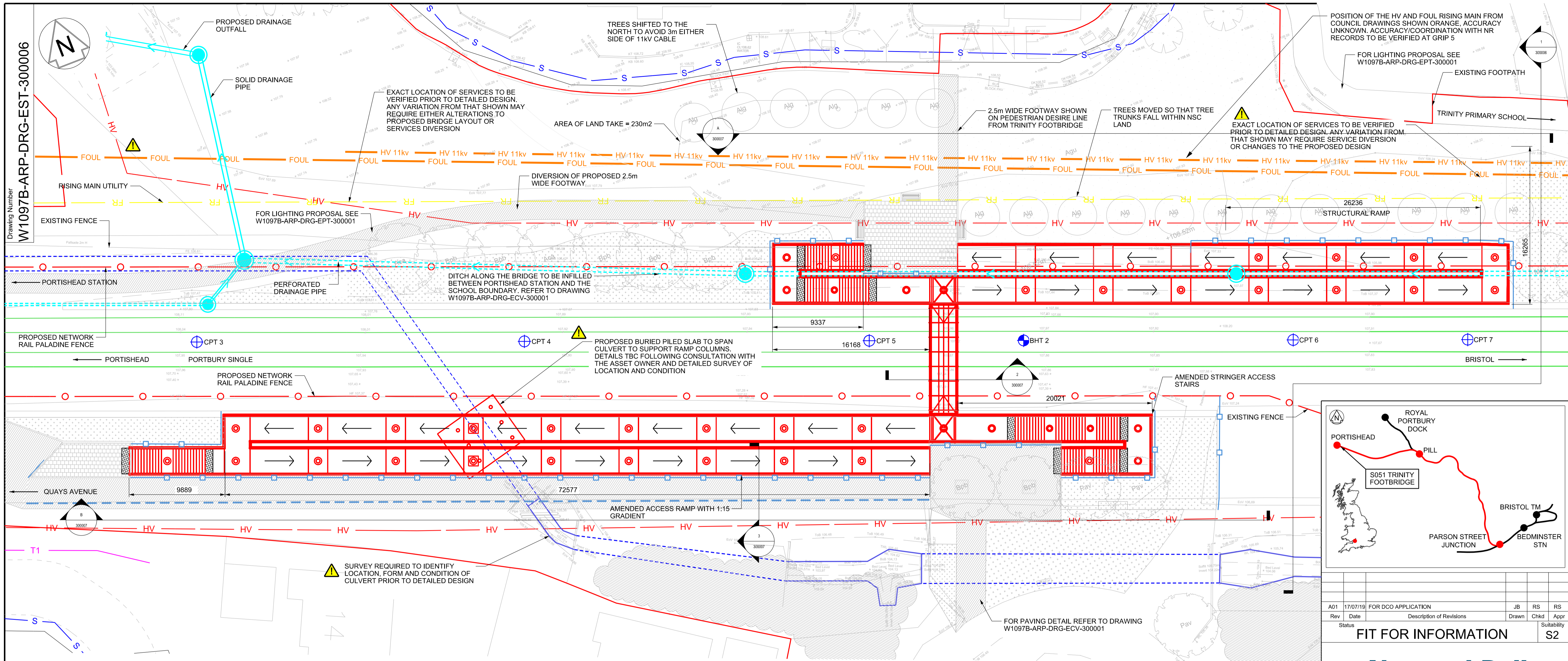
Author: ARUP

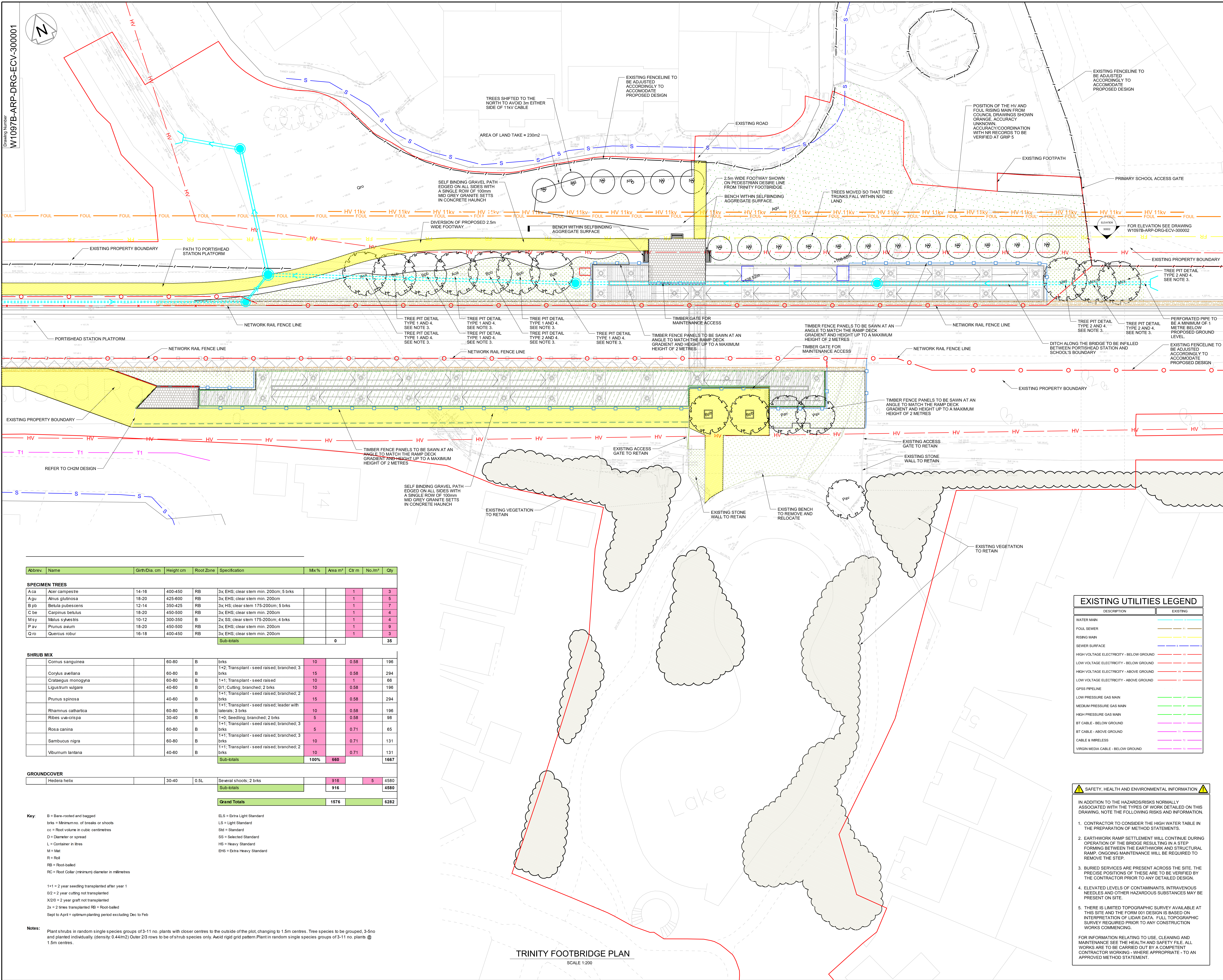
Date: November 2019



Document Index

2.15	S051 Trinity Footbridge Proposed General Arrangement Plan	The Infrastructure Planning (Applications: Prescribed Forms and Procedure) Regulations 2009, regulation 5(2)(o)	W1097B-ARP-DRG-EST-300006 Rev A01
2.16	S051 Trinity Footbridge Proposed Landscaping General Arrangement Sheets 1 and 2	The Infrastructure Planning (Applications: Prescribed Forms and Procedure) Regulations 2009, regulation 5(2)(o)	W1097B-ARP-DRG-ECV-300001-2 Rev A02
2.17	S051 Trinity Footbridge Proposed Electrical Layout General Arrangement	The Infrastructure Planning (Applications: Prescribed Forms and Procedure) Regulations 2009, regulation 5(2)(o)	W1097B-ARP-DRG-EPT-300001 Rev A01



TRINITY FOOTBRIDGE PLAN
SCALE 1:200

Legend/Notes

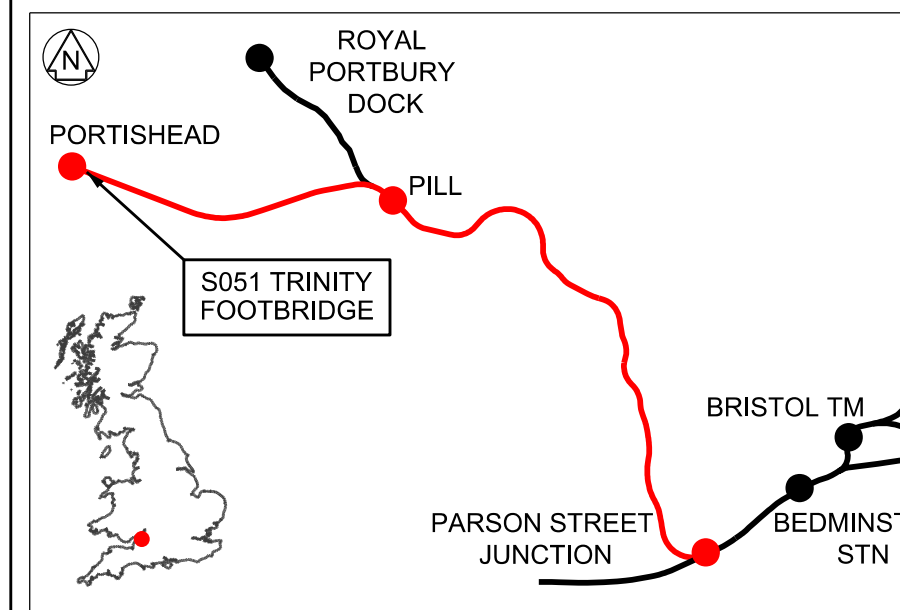
LEGEND

EXISTING VEGETATION

PROPOSED:

- SPECIMEN TREE - SEE PLANTING SCHEDULE
- NATIVE SHRUB MIX - SEE PLANTING SCHEDULE
- GRASS MIX - GERMINAL AMENITY A19 SEED MIXTURE
- GROUND COVER - SEE PLANTING SCHEDULE
- LOOSE GRAVEL OR BALLAST
- GOLDEN AMBER WITH SINGLE GRANITE SETT EDGE
- CONCRETE BLOCK PAVING - MARSHALLS MISTRAL PRIORA, HARVEST BUFF, RANDOM COURSE, WITH FLUSH CONSERVATION CHARCOAL KERB
- CONCRETE BLOCK PAVING - MARSHALLS MISTRAL PRIORA, SILVER GREY, RANDOM COURSE, WITH FLUSH CONSERVATION CHARCOAL KERB
- BENCH - OLLERTON M3 STAINLESS STEEL SEAT
- TIMBER POST AND RAIL FENCE 1.2 METRES HIGH
- TIMBER FENCE - SILVA TIMBER, WESTERN RED CEDAR SLATED SCREENS (MAX. HEIGHT 2 METRES)
- NETWORK RAIL PALADINE FENCE GREEN POWDER COATED
- BOLLARDS - OLLERTON TIMBER BOLLARD WITH PYRAMID TOP
- TREE PIT WITH OLLERTON M3 STAINLESS STEEL GRILLE
- CONTOUR LINE AND LEVEL (SEE NOTE 6)
- DEVELOPMENT CONSENT ORDER (DCO) LAND BOUNDARY

- FOR ENGINEERING WORKS AND MATERIALS SEE DRAWING W1097B-ARP-DRG-EST-300006 AND FOR LIGHTING PROPOSALS SEE DRAWING W1097B-ARP-DRG-EPT-300001
- ALL PLANTING WORKS TO CONFORM WITH BS 4428, 1989 'GENERAL LANDSCAPE OPERATIONS'.
- FOR PLANTING DETAILS SEE DRAWING W1097B-ARP-DRG-ECV-300002.
- PROTECTION OF EXISTING VEGETATION TO BE IN ACCORDANCE WITH BS 8337, 2012 'TREES IN RELATION TO DESIGN, DEMOLITION AND CONSTRUCTION'.
- ALL TOPSOIL STRIPPED FROM SITE TO BE RETAINED AND RE-USED ON SITE WITHIN PLANTING AREAS.
- EXACT LOCATION OF BURIED SERVICES TO BE CONFIRMED ON SITE BY CONTRACTOR PRIOR TO ANY LANDSCAPE WORKS.
- ALL LEVELS ARE IN METRES ABOVE SNARE GRID REEPP12 (ORDNANCE DATUM +100 METRES).
- CONTRACTOR TO MAKE GOOD AS EXISTING ALL AREAS DISTURBED BY CONSTRUCTION ACTIVITIES.
- ALL HARD SURFACING AND STREET FURNITURE TO BE AS SPECIFIED OR SIMILAR AS APPROVED.

0 4 8 12 16 20m
SCALE 1:200 @ A0

Rev	Date	Description of Revisions	JB	RS	RS
1	26/09/19	DCO APPLICATION			
2	26/09/19	DCO APPLICATION			
3	26/09/19	DCO APPLICATION			
4	26/09/19	DCO APPLICATION			
5	26/09/19	DCO APPLICATION			
6	26/09/19	DCO APPLICATION			
7	26/09/19	DCO APPLICATION			
8	26/09/19	DCO APPLICATION			
9	26/09/19	DCO APPLICATION			
10	26/09/19	DCO APPLICATION			
11	26/09/19	DCO APPLICATION			
12	26/09/19	DCO APPLICATION			
13	26/09/19	DCO APPLICATION			
14	26/09/19	DCO APPLICATION			
15	26/09/19	DCO APPLICATION			
16	26/09/19	DCO APPLICATION			
17	26/09/19	DCO APPLICATION			
18	26/09/19	DCO APPLICATION			
19	26/09/19	DCO APPLICATION			
20	26/09/19	DCO APPLICATION			

FIT FOR INFORMATION

ARUP
61 St Thomas Street
Bristol BS1 6LZ
Tel +44(0)117 976 5432 Fax +44(0)117 976 5433
www.arup.comPORTISHEAD BRANCH LINE
(METROWEST PHASE 1)S051 TRINITY FOOTBRIDGE
PROPOSED LANDSCAPING
GENERAL ARRANGEMENT

Designed	J. BACINSKI	Signed		Date	26/09/19
Drawn	J. BACINSKI	Signed		Date	26/09/19
Checked	R. SNELL	Signed		Date	26/09/19
Approved	R. SNELL	Signed		Date	26/09/19

As Shown

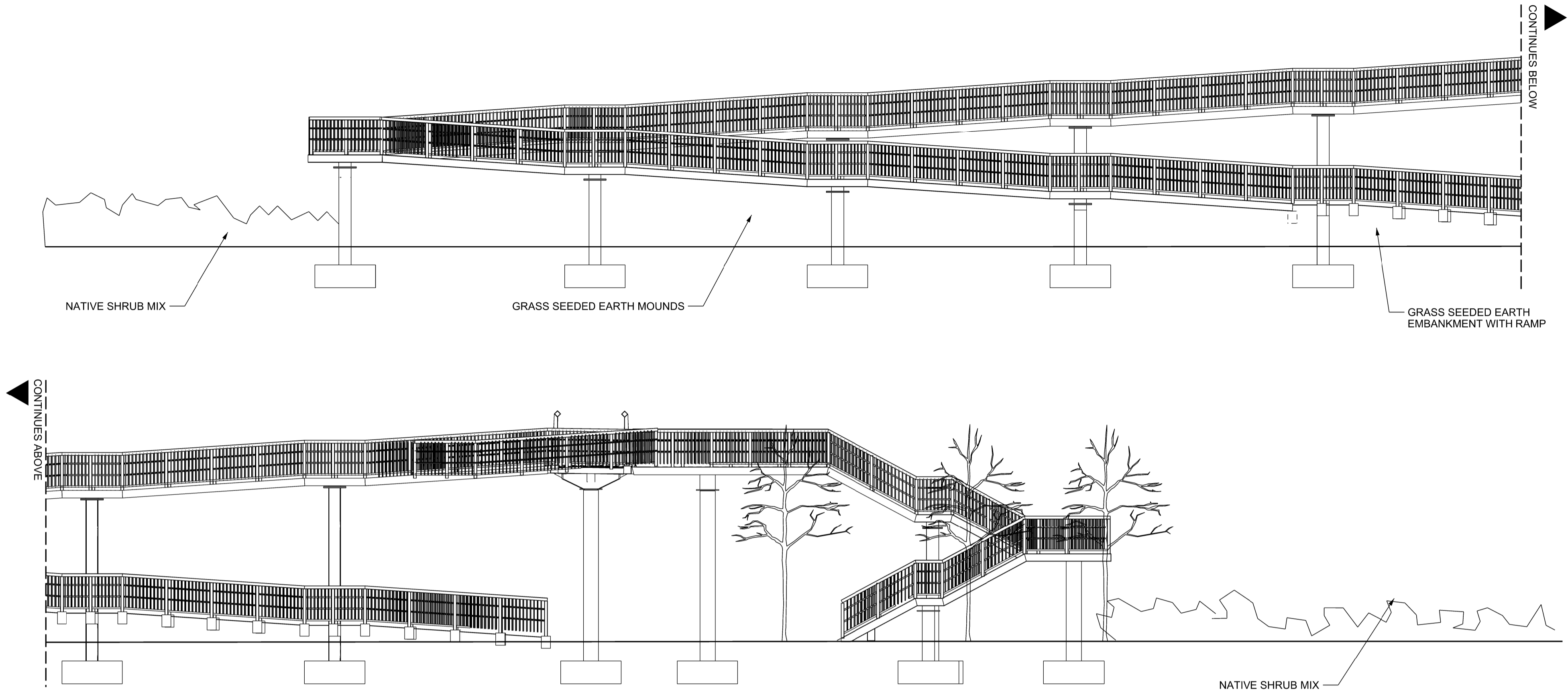
POD 129m 06ch

Sheet 1 of 2

Drawing Number

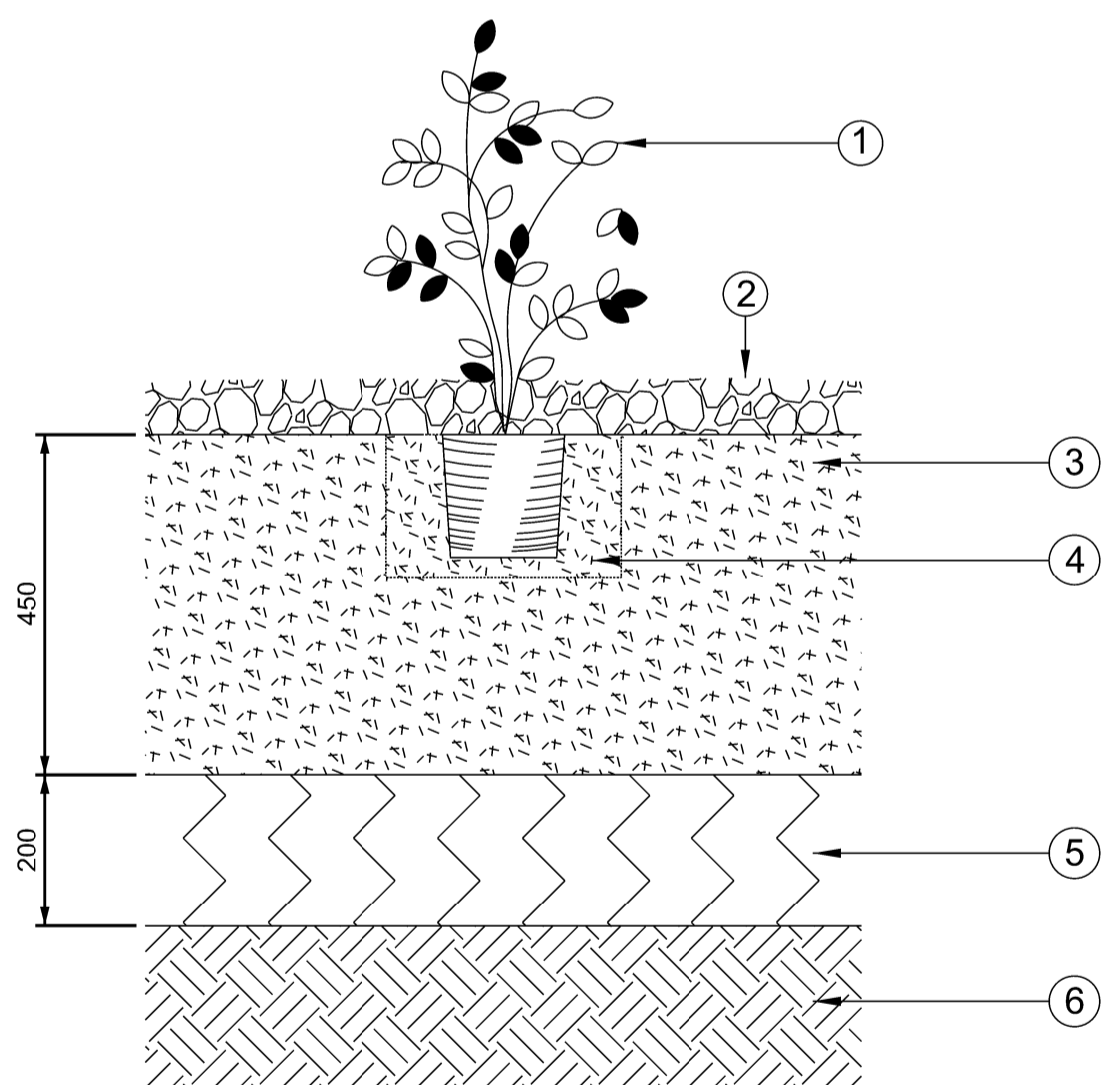
W1097B-ARP-DRG-ECV-300001 A02

Sheet Size A0 841 x 1190



ELEVATION (FOR LOCATION SEE DRAWING W1097B-ARP-DRG-ECV-300001)

SCALE 1:100

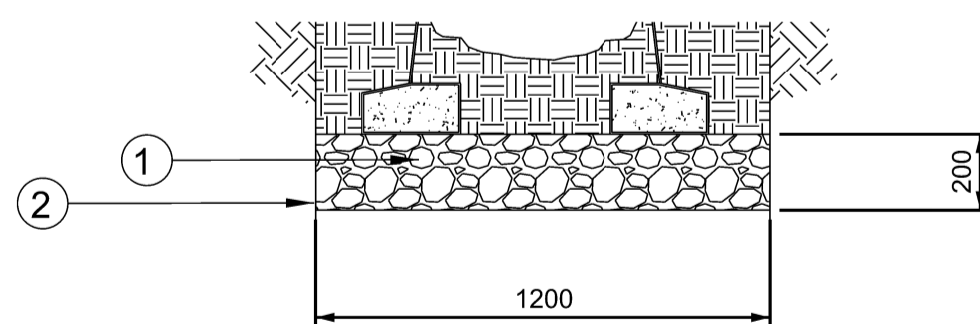


NOTES

1. ORNAMENTAL SHRUB OR GROUND COVER PLANT IN ACCORDANCE WITH THE PLANTING SCHEDULE. SEE NOTE D.
2. 75MM DEEP ORGANIC BARK MULCH IN SOFT LANDSCAPE AREAS. SAMPLE TO BE APPROVED.
3. 450MM TOPSOIL PLANTING BED.
4. PLANTING PITS TO BE 150 MM WIDER THAN THE ROOT SPREAD. THE SHRUBS SHALL BE SET IN THE HOLES SO THAT THE SOIL LEVEL, AFTER SETTLEMENT, WILL BE AT THE ORIGINAL ROOT COLLAR LEVEL ON THE STEM OF THE SHRUB. LOOSEN ROOTS AT BOTTOM OF COMPOST GENTLY WITH FINGERTIPS PRIOR TO PLANTING. THE HOLES SHALL BE BACKFILLED WITH 80% TOPSOIL TO 20% COMPOST, TO HALF THEIR DEPTH AND SHALL BE FIRMED BY TREADING. THE REMAINDER OF THE TOPSOIL SHALL THEN BE RETURNED AND AGAIN FIRMED BY TREADING.
5. EXISTING SUB GRADE TO BE RIPPED TO A DEPTH OF 200MM.
6. EXISTING SUB GRADE

DETAIL 1 - SHRUB PLANTING

SCALE 1:10

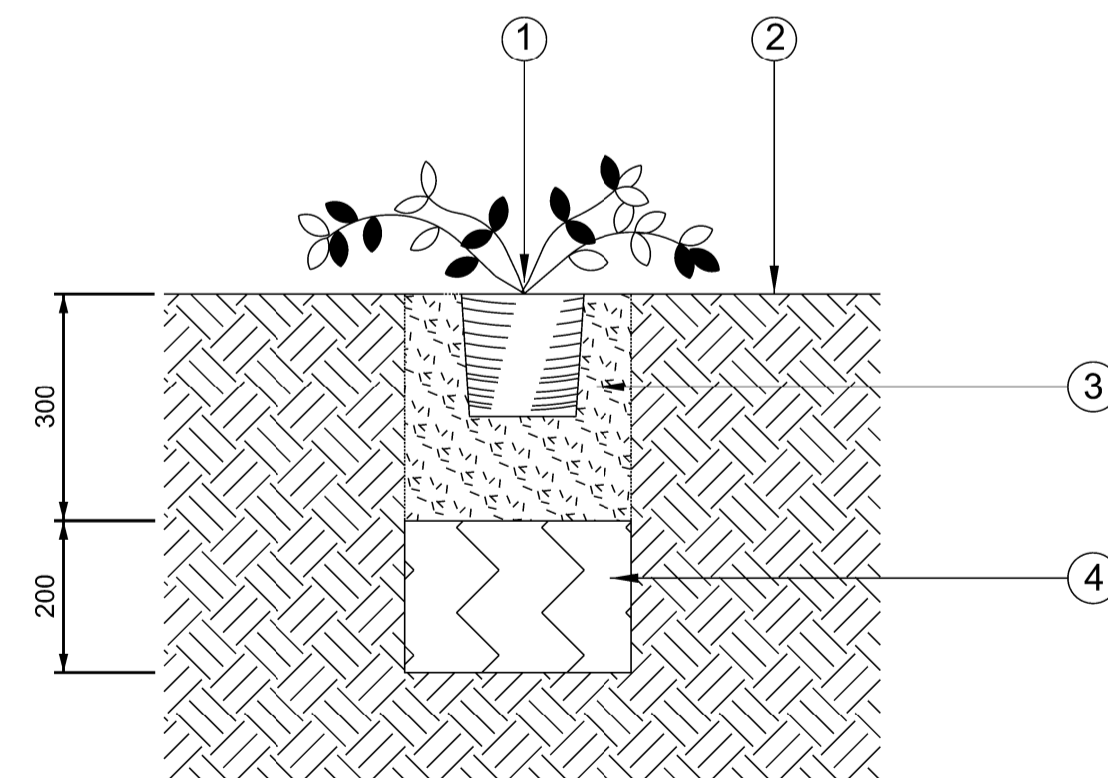


NOTES

1. 20-40MM GRAVEL CLEAN DRAINAGE LAYER.
2. GEOTEXTILE SEPERATION LAYER. GEOTEXTILE TO COMPLY WITH CLAUSE 609 AND SHALL SUSTAIN A TENSILE LOAD OF NOT LESS THAN 3.4KN/M AT 5% STRAIN, DETERMINED IN A "WIDE STRIP" TENSILE TEST CARRIED OUT ACCORDANCE WITH BS6909 PART 1

DETAIL 2 - TREE OVER PERFORATED DRAINAGE PIPE

SCALE 1:20



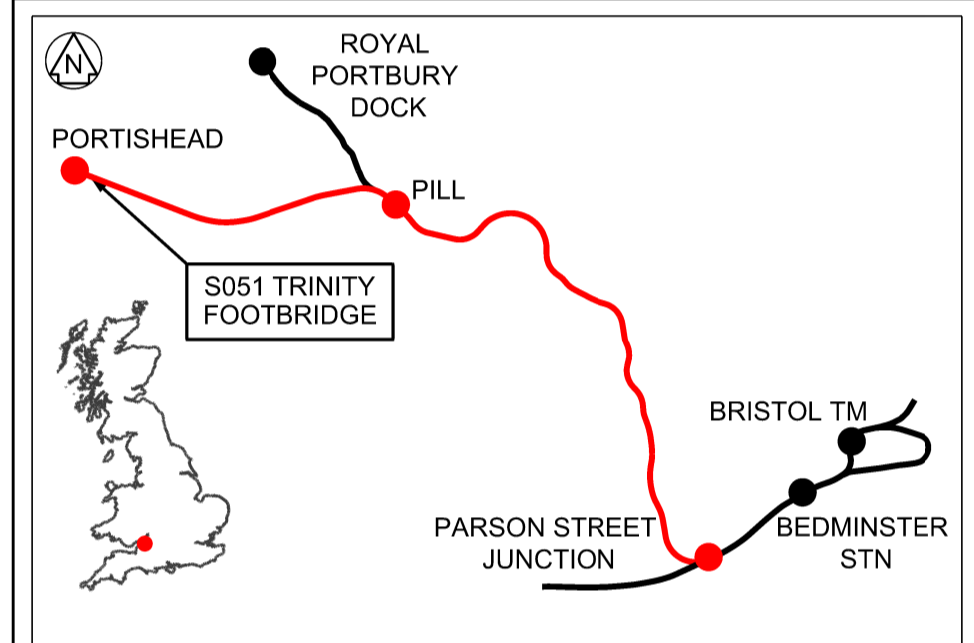
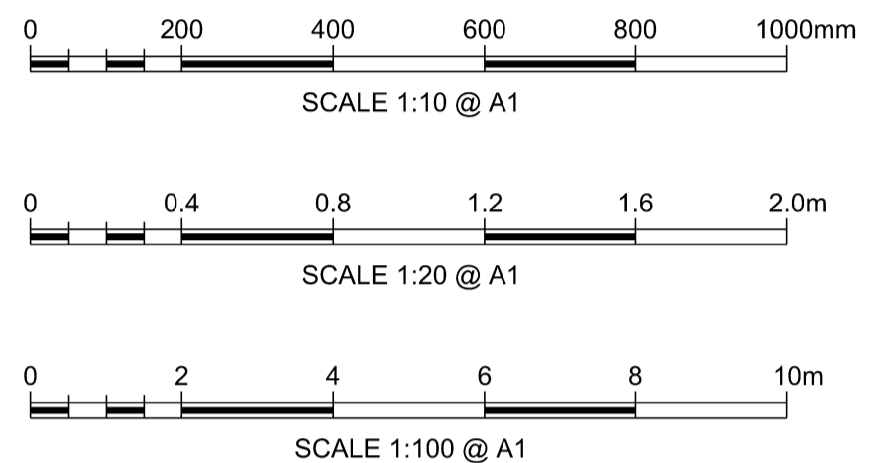
NOTES

1. GROUND COVER OR HERBACEOUS PLANT IN ACCORDANCE WITH THE PLANTING SCHEDULE. SEE NOTE D.
2. EXISTING SOIL/VEGETATED AREAS.
3. PLANTING PITS TO BE DUG INTO EXISTING SOIL 150MM WIDER THAN THE ROOT SPREAD AND 300MM DEEP. THE PLANTS SHALL BE SET IN THE HOLES SO THAT THE SOIL LEVEL, AFTER SETTLEMENT, WILL BE AT THE ORIGINAL ROOT COLLAR LEVEL ON THE STEM OF THE SHRUB. LOOSEN ROOTS AT BOTTOM OF COMPOST GENTLY WITH FINGERTIPS PRIOR TO PLANTING. THE HOLES SHALL BE BACKFILLED WITH 80% TOPSOIL TO 20% COMPOST TO HALF THEIR DEPTH AND SHALL BE FIRMED BY TREADING. THE REMAINDER OF THE TOPSOIL SHALL THEN BE RETURNED AND AGAIN FIRMED BY TREADING.
4. EXISTING SUB GRADE TO BE RIPPED TO A DEPTH OF 200MM.

DETAIL 3 - GROUND COVER PLANTING

SCALE 1:10

- Legend/Notes
- ALL DIMENSIONS ARE IN MILLIMETRES (mm) UNLESS STATED OTHERWISE.
 - ALL LEVELS ARE IN METRES ABOVE SNAKE GRID RBEPP12 (ORDNANCE DATUM + 100 METRES).
 - THIS DRAWING SHOULD BE READ IN CONJUNCTION WITH THE CONTRACT DOCUMENTS.
 - REFER TO DRAWING W1097B-ARP-DRG-ECV-300001 FOR PLANTING PLAN AND SCHEDULE.



Rev	Date	Description of Revisions	Drawn	Chkd	Appr
A02	20/09/19	FOR DCO APPLICATION	JB	RS	RS
Status					Suitability
FIT FOR INFORMATION					S2



Contractor(s)

Project

PORTISHEAD BRANCH LINE (METROWEST PHASE 1)

Drawing Title

S051 TRINITY FOOTBRIDGE
PROPOSED LANDSCAPING
GENERAL ARRANGEMENT

Designed	J. BACINSKI	Signed	Date	20/09/19
Drawn	J. BACINSKI	Signed	Date	20/09/19
Checked	R. SNELL	Signed	Date	20/09/19
Approved	R. SNELL	Signed	Date	20/09/19
Scale(s)	As Shown	ELR & Mileage	POD 129m 06ch	
Alternative Reference		Sheet		
			2 of 2	
Drawing Number				Revision

W1097B-ARP-DRG-ECV-300002 A02

LIGHTING COLUMNS TO ONE
PATH BEHIND PLATFORM.
COLUMNS EVERY 15m

DNO CABINET/METER _____
HANDRAIL LIGHTING 1 FCU _____
CUBICLE 1 _____
CABLES TO THE CUBICLE _____
RISE TO BRIDGE LANDING _____

DUCTS WITHIN
THE BRIDGE DECK —————

— HANDRAIL LIGHTING 3 FCU

— HANDRAIL LIGHTING 2 FCU

CUBICLE 2

TRINITY FOOTBRIDGE ELECTRICAL LAYOUT

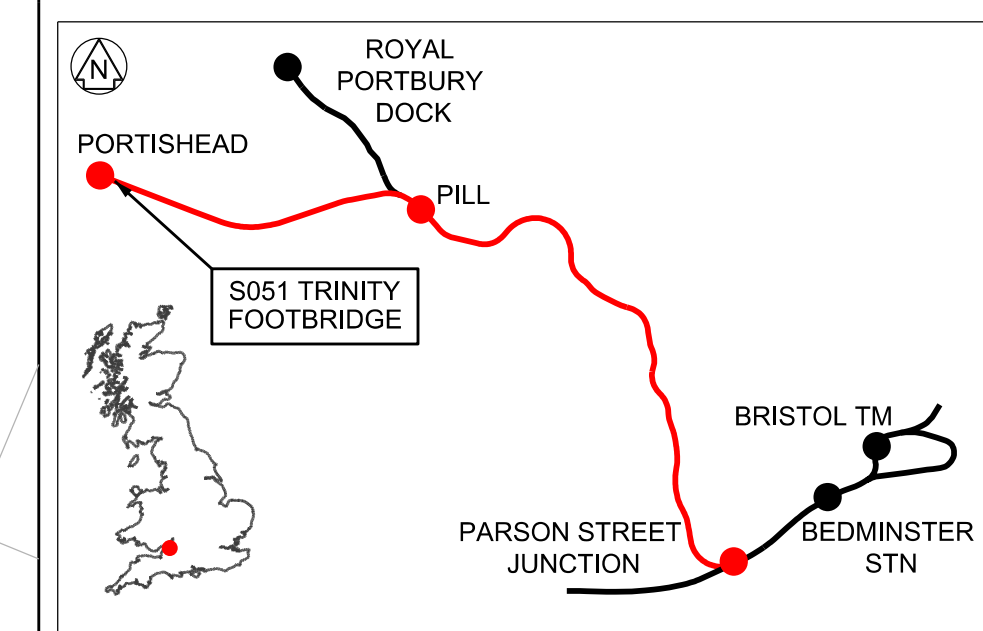
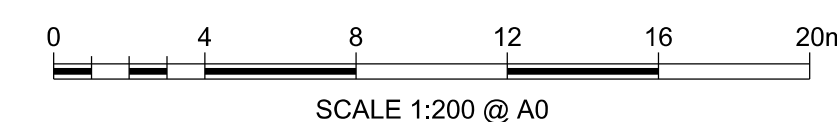
SCALE 1:200

	Legend/Notes
--	--------------

1. THIS IS NOT AN INSTALLATION DRAWING.
2. DRAWINGS SHOULD NOT BE SCALED, ONLY FIGURED DIMENSIONS ARE TO BE USED.
3. LIGHTING CONTROL SHALL INCLUDE A PHOTOCELL, TIMER AND MANUAL OVERRIDE SWITCH. THE PHOTOCELL SHALL BE MOUNTED ON THE CUBICLE. CARE SHALL BE TAKEN WHEN SITING THE PHOTOCELL TO ENSURE FALSE OPERATION FROM OTHER LIGHT SOURCES.
4. PRESENCE DETECTORS WILL CONTROL THE EXTERNAL LUMINAIRES. DIMMABLE ON NON-OCCUPANCY TO A PRE-SET LEVEL.
5. CABLE ROUTES TO BE CONFIRMED ON THE NEXT STAGE.

LEGEND

DEVELOPMENT CONSENT ORDER (DCO)
LAND BOUNDARY

[illegible]

Contractor:

ARUP

63 St Thomas Street
Bristol BS1 6JZ
Tel +44(0)117 978 5432 Fax +44(0)117 978 5433
www.ajrup.com

Project

PORTISHEAD BRANCH LINE
METROWEST PHASE 1

Drawing Title:

Drawing Title

S051 TRINITY FOOTBRIDGE
PROPOSED ELECTRICAL LAYOUT
GENERAL ARRANGEMENT

Designed	A. LOPEZ	Signed	Date 18/07/1
Drawn	J. BACINSKI	Signed	Date 18/07/1
Checked	R. SNELL	Signed	Date 18/07/1
Approved	R. SNELL	Signed	Date 18/07/1

Scale(s)	1:200	ELR & Mileage	POD 129m 06c
----------	-------	---------------	--------------

Drawing Number	Revision
W1097B-ARP-DRG-EPT-300001	A01

Sheet Size 40.84

